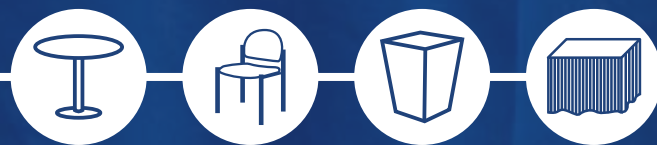


# SHEPARD FURNISHINGS & DECOR CATALOG



Dress up your space.  
**With Shepard, You Can.**

# TABLES

*The product photos shown are representative of the products. Actual products and colors may vary from the images shown. Not every item or every color will be available on every event.*

## UNSKIRTED



**Display Table**  
#50040  
4' x 24" x 30"  
Unskirted



**Display Table**  
#50041  
4' x 24" x 42"  
Unskirted



**Display Table**  
#50044  
6' x 24" x 30"  
Unskirted



**Display Table**  
#50045  
6' x 24" x 42"  
Unskirted



**Display Table**  
#50048  
8' x 24" x 30"  
Unskirted



**Display Table**  
#50049  
8' x 24" x 42"  
Unskirted

## SKIRTED

6' and 8' Long Tables are Skirted on 3 Sides. For Skirting on 4 Sides, please order 4th Side Skirt.



**Display Table**  
#50042  
4' x 24" x 30"  
Skirted



**Display Table**  
#50043  
4' x 24" x 42"  
Skirted



**Display Table**  
#50046  
6' x 24" x 30"  
Skirted



**Display Table**  
#50047  
6' x 24" x 42"  
Skirted



**Display Table**  
#50050  
8' x 24" x 30"  
Skirted



**Display Table**  
#50051  
8' x 24" x 42"  
Skirted

## PEDESTAL & SIDE



**30" Natural Pedestal Table**  
#50706  
30" x 36"  
Natural Feel Pedestal Table, Maple Top, Black Base



**42" Natural Pedestal Table**  
#50707  
42" x 36"  
Natural Feel Pedestal Table, Maple Top, Black Base



**30" Pedestal Table**  
#50032  
30" x 36"  
Pedestal Table, Grey Fleck Top, Chrome Base



**42" Pedestal Table**  
#51089  
42" x 36"  
Round High Pedestal Table, Grey Fleck Top, Chrome Base



**Round Side Table**  
#50030  
18" x 24"



**Square Side Table**  
#50031  
18" x 18" x 24"

# CHAIRS

*The product photos shown are representative of the products. Actual products and colors may vary from the images shown. Not every item or every color will be available on every event.*

## STOOLS & CHAIRS WITH ARMS

---



**Director's Stool**  
#51090  
Black Fabric,  
Maple Wood



**Natural Feel Stool**  
#50705  
Light Maple Back,  
Black Fabric Seat



**Padded Stool**  
#50024  
Padded Stool with  
Back, Grey Fabric



**Director's Chair**  
#51086  
Black Fabric,  
Maple Wood



**Upholstered Arm Chair**  
#50021  
Upholstered Arm Chair,  
Grey Fabric

## CHAIRS WITHOUT ARMS

---



**Natural Feel Chair**  
#50704  
Light Maple Back,  
Black Fabric Seat



**Upholstered Side Chair**  
#50020  
Upholstered Side Chair,  
Grey Fabric

# DISPLAYS

*The product photos shown are representative of the products. Actual products and colors may vary from the images shown. Not every item or every color will be available on every event.*

## FOR HANGING



**Bag Rack**  
#50175  
9" x 12" x 71"  
Adjustable Heights



**Coat Rack**  
#50092  
2" x 22" x 69"  
Silver



**Spiral Garment Rack**  
#50093  
30" x 70"  
Silver



**2' x 8' Grid with Legs**  
#50236  
2' x 8'  
Chrome  
Also Available Without  
Legs (#50237)



**3.5' x 8' Slatwall**  
#66147  
3.5' x 8'  
Grey



**8' x 4' & 4' x 8' Peg Board**  
# 66148 (horz)  
8' x 4'  
  
#66149 (vert)  
4' x 8'  
White



**6" Hooks for Peg Board**  
#50104  
Silver



**7-Ball Waterfall Grid Attachment**  
#50242  
Silver  
Also Available for Slat  
Wall #50243

## UPRIGHT, CROSSBARS & DRAPERY



**8' High Upright with Base**  
#50088  
Crossbar rented  
separately



**6' - 10' Crossbar**  
#50349  
1 1/4" D



**7' - 12' Crossbar**  
#50348  
1 1/4" D



**3' High Drape**  
#50074



**8' High Drape**  
#50073

## SHELVING



**4' x 12" Display Shelf**  
#50296  
4' x 12"  
White Shelf with Black  
Bases



**6' x 12" Display Shelf**  
#50297  
6' x 12"  
White Shelf with Black  
Bases



**Tensa Barrier Stanchion**  
#50427  
Barrier with Black Belt  
Barrier 13" x 41"  
Black Belt 117"  
Rented individually,  
not a set

## BARRIER



# DISPLAYS & SHOWCASES

*The product photos shown are representative of the products. Actual products and colors may vary from the images shown. Not every item or every color will be available on every event.*

## FOR SIGNS & LITERATURE



**Horizontal Tackboard**  
#50060  
4' x 8'  
Black Legs, Grey Fabric



**Vertical Tackboard**  
#50061  
8' x 4'  
Black Legs, Grey Fabric



**Literature Rack**  
#50245  
16" x 10" x 59"



**Chrome Sign Holder**  
#50095  
Holds 22" x 28" Sign



**Floor Easel**  
#50094  
31" x 31" x 64"

## OTHER



**Wastebasket**  
#50091



**Mini Refrigerator**  
#50098



**Drawing Bowl**  
#50185



**Sand Bag**  
#51087

## SHOW CASES



**4' Full View Showcase**  
#50067

**6' Full View Showcase**  
#50068



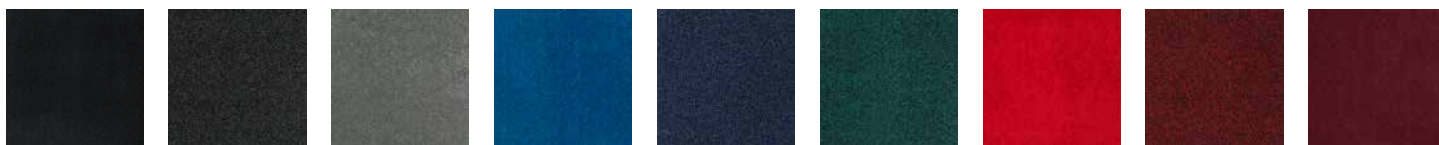
**4' Quarterview Showcase**  
#50069

**6' Quarterview Showcase**  
#50070

# FLOORING

*The product photos shown are representative of the products. Actual products and colors may vary from the images shown. Not every item or every color will be available on every event.*

## EXPO - 13 OZ



Black

Tuxedo

Grey

Blue

Eclipse

Peacock

Red

Cayenne

Burgundy

## PREMIUM - 28 OZ



Black

Deep Navy

Silver Cloud

Charcoal

Red

Beige

## PLUSH - 50 OZ



Black

Dark Grey

Silver Dollar

Sand

White

Electric Blue

Navy

Crimson

## VINYL - CUSTOM ORDER ONLY



Rosemary  
Stone

Snow

Maple

Silverwood

Walnut

Barnwood

# SKIRT & DRAPE

*The product photos shown are representative of the products. Actual products and colors may vary from the images shown. Not every item or every color will be available on every event.*

## SKIRT

---



Red



Burgundy



Gold



Green



Blue



Teal



White



Grey



Black

## SKIRT - SPANDEX

---



Red



Blue



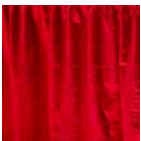
White



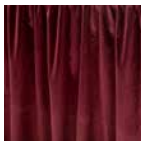
Black

## DRAPE

---



Red



Burgundy



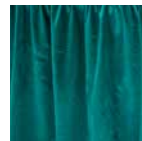
Gold



Green



Blue



Teal



White



Grey



Black

## STANDARD FURNISHINGS

## Atlanta Boat Show

G155540123

Georgia World Congress Center | Atlanta, GA

January 12 - 15, 2023

## ONLINE &amp; DISCOUNT DEADLINE:\* THURSDAY, DECEMBER 22, 2022

\* Order with complete Method of Payment must be received before Discount Deadline date to receive discounted pricing.

## Tables

6' and 8' Skirted Tables have skirts on 3 sides, to have drape on all 4 sides you must order 4th side drape.

COLORS: Red (01), Green (02), White (03), Gold (04), Blue (05), Black (06), Burgundy (07), Grey (10), Teal (13) • Spandex: Red (01), White (03), Blue (05), Black (06)

CODE	ITEM	QTY	COLOR	ONLINE	DISCOUNT	REGULAR	TOTAL
50042	4' (l) x 24" (w) x 30" (h) Skirted Table			\$156.85	\$180.40	\$202.05	
50046	6' (l) x 24" (w) x 30" (h) Skirted Table			\$138.00	\$172.50	\$193.20	
50050	8' (l) x 24" (w) x 30" (h) Skirted Table			\$155.00	\$194.00	\$217.30	
50043	4' (l) x 24" (w) x 42" (h) Skirted Table			\$190.65	\$219.25	\$245.55	
50047	6' (l) x 24" (w) x 42" (h) Skirted Table			\$244.15	\$280.75	\$314.45	
50051	8' (l) x 24" (w) x 42" (h) Skirted Table			\$287.25	\$330.35	\$370.00	
50052	4th Side Skirt for 30" High Table			\$95.35	\$109.65	\$122.80	
50171	4th Side Skirt for 42" High Table			\$95.35	\$109.65	\$122.80	
50040	4' (l) x 24" (w) x 30" (h) UnSkirted Table		n/a	\$106.50	\$122.45	\$137.15	
50044	6' (l) x 24" (w) x 30" (h) UnSkirted Table		n/a	\$70.00	\$87.50	\$98.00	
50048	8' (l) x 24" (w) x 30" (h) UnSkirted Table		n/a	\$79.00	\$98.75	\$110.60	
50041	4' (l) x 24" (w) x 42" (h) UnSkirted Table		n/a	\$119.85	\$137.85	\$154.40	
50045	6' (l) 24" x (w) x 42" (h) UnSkirted Table		n/a	\$149.75	\$172.20	\$192.85	
50049	8' (l) x 24" (w) x 42" (h) UnSkirted Table		n/a	\$167.10	\$192.15	\$215.20	
51089	42" (h) Pedestal Table, 36" Diameter, Grey Fleck Top		n/a	\$268.25	\$308.50	\$345.50	
50032	30" (h) Pedestal Table, 36" Diameter, Grey Fleck Top		n/a	\$250.80	\$288.40	\$323.00	
50030	Round Side Table - 24" (w) x 18" (h)		n/a	\$126.25	\$145.20	\$162.60	
50031	Square Side Table - 24" (w) x 18" (h)		n/a	\$126.25	\$145.20	\$162.60	
50706	30" (h) Natural Pedestal Table, 36" Diameter, Maple Top		n/a	\$328.15	\$377.35	\$422.65	
50707	42" (h) Natural Pedestal Table, 36" Diameter, Maple Top		n/a	\$342.10	\$393.40	\$440.60	
50700	White Fabric Table Cover w/ 6'x30" Table		03	\$272.35	\$313.20	\$350.80	
50700	Red Fabric Table Cover w/ 6'x30" Table		01	\$272.35	\$313.20	\$350.80	
50700	Blue Fabric Table Cover w/ 6'x30" Table		05	\$272.35	\$313.20	\$350.80	
50700	Black Fabric Table Cover w/ 6'x30" Table		06	\$272.35	\$313.20	\$350.80	

## Seating

CODE	ITEM	QTY	COLOR	ONLINE	DISCOUNT	REGULAR	TOTAL
50020	Side Chair Grey Fabric		n/a	\$97.05	\$111.60	\$125.00	
50021	Arm Chair Grey Fabric		n/a	\$77.00	\$96.25	\$107.80	
50024	Stool with Back Grey Fabric		n/a	\$161.25	\$185.45	\$207.70	
51086	Director's Chair Black Fabric		n/a	\$100.15	\$115.15	\$128.95	
51090	Director's Stool Black Fabric		n/a	\$179.25	\$206.15	\$230.90	
50705	Natural Feel Stool Maple Back, Black Fabric Seat		n/a	\$195.50	\$224.80	\$251.80	
50704	Natural Feel Chair, Maple Back, Black Fabric Seat		n/a	\$160.55	\$184.65	\$206.80	

Submission of this form indicates you read and accept the Payment Policy and Terms & Conditions. There are no exchanges or refunds once item has been delivered to your booth. Cancellations must be received in writing 14 days prior to first exhibitor move in day. Rental items found and in use in your booth are subject to "Regular" pricing.

TOTAL ESTIMATE \$ \_\_\_\_\_

TAX (All tax rates are subject to change) 8.90%

AMOUNT DUE \$ \_\_\_\_\_

COMPANY NAME: \_\_\_\_\_ BOOTH NUMBER: \_\_\_\_\_

CONTACT NAME: \_\_\_\_\_

EMAIL ADDRESS: \_\_\_\_\_

Email completed form to: [orders@shepardes.com](mailto:orders@shepardes.com)

# SPECIALTY, DISPLAYS & DRAPERY

**Atlanta Boat Show**
**G155540123**

Georgia World Congress Center | Atlanta, GA

January 12 - 15, 2023

**ONLINE & DISCOUNT DEADLINE:\* THURSDAY, DECEMBER 22, 2022**

\* Order with complete Method of Payment must be received before Discount Deadline date to receive discounted pricing.

CODE	ITEM	QTY	COLOR	ONLINE	DISCOUNT	REGULAR	TOTAL
50091	Wastebasket		n/a	\$19.00	\$23.75	\$19.00	
50094	Floor Easel, Chrome		n/a	\$53.75	\$61.80	\$69.20	
50245	Literature Rack Silver, Glass		n/a	\$198.30	\$228.05	\$255.40	
50175	Bag Rack, Chrome		n/a	\$262.60	\$302.00	\$338.25	
50092	Coat Rack, Chrome		n/a	\$93.25	\$107.25	\$120.10	
50093	Garment Rack, Chrome		n/a	\$262.60	\$302.00	\$338.25	
50427	Tensabarrier, Per Stem, Black		n/a	\$110.75	\$127.35	\$142.65	
50095	Sign Holder, 22" x 28" Chrome		n/a	\$122.30	\$140.65	\$157.55	
50185	Drawing Bowl, Clear		n/a	\$49.30	\$56.70	\$63.50	
50296	4' x 12" Display Riser White and Black		n/a	\$110.90	\$127.55	\$142.85	
50297	6' x 12" Display Riser White and Black		n/a	\$138.00	\$158.70	\$177.75	
50098	Mini Refrigerator, Approx. 3 cubic feet		n/a	\$418.80	\$481.60	\$539.40	
50067	4' Full View Showcase, White		n/a	\$989.55	\$1,138.00	\$1,274.55	
50068	6' Full View Showcase, White		n/a	\$1,091.35	\$1,255.05	\$1,405.65	
50069	4' Quarter View Showcase, White		n/a	\$989.55	\$1,138.00	\$1,274.55	
50070	6' Quarter View Showcase, White		n/a	\$1,091.35	\$1,255.05	\$1,405.65	
50060	4' x 8' Horizontal Posterboard Grey Fabric		n/a	\$320.45	\$368.50	\$412.70	
50061	4' x 8' Vertical Posterboard Grey Fabric		n/a	\$320.45	\$368.50	\$412.70	
50236	Grids 2' x 8' with Legs, Each		n/a	\$236.70	\$272.20	\$304.85	
50237	Grid 2' x 8' without Legs, Each		n/a	\$177.25	\$203.85	\$228.30	
50242	7-Ball Waterfall for Grids		n/a	\$16.30	\$18.75	\$21.00	
50104	6" Hooks (12) for Peg Boards		n/a	\$48.15	\$55.35	\$62.00	

50073	8' High Drape on a Cross Bar, per linear foot (minimum 5' linear feet rental)			\$12.95	\$12.95	\$14.50	
50074	3' High Drape on a Cross Bar, per linear foot (minimum 5' linear feet rental)			\$8.85	\$8.85	\$9.90	
50088	8' Upright with Base		n/a	\$34.70	\$39.90	\$44.70	
52065	3' Upright with Base		n/a	\$34.70	\$39.90	\$44.70	
50349	6'-10' Crossbar		n/a	\$23.05	\$26.50	\$29.70	
50348	7'-12' Crossbar		n/a	\$23.05	\$26.50	\$29.70	
50058	Sateen, per linear foot (minimum 5' linear feet rental)			\$21.50	\$24.70	\$27.65	

**DRAPERY COLORS:** Red (01), White (03), Gold (04), Blue (05), Black (06), Burgundy (07), Grey (10)

<b>TOTAL ESTIMATE</b>	\$ _____
<b>TAX</b> (All tax rates are subject to change)	8.90%
<b>AMOUNT DUE</b>	\$ _____

Submission of this form indicates you read and accept the Payment Policy and Terms & Conditions. There are no exchanges or refunds once item has been delivered to your booth. Cancellations must be received in writing 14 days prior to first exhibitor move in day. Rental items found and in use in your booth are subject to "Regular" pricing.

COMPANY NAME: \_\_\_\_\_ BOOTH NUMBER: \_\_\_\_\_

CONTACT NAME: \_\_\_\_\_

EMAIL ADDRESS: \_\_\_\_\_


 Email completed form to: [orders@shepardes.com](mailto:orders@shepardes.com)

## FLOORING

G155540123

## Atlanta Boat Show

Georgia World Congress Center | Atlanta, GA

January 12 - 15, 2023

**ONLINE & DISCOUNT DEADLINE:\* THURSDAY, DECEMBER 22, 2022**  
**PREMIUM PLUSH & PREMIUM VINYL DEADLINE:\*\* TUESDAY, DECEMBER 13, 2022**

\* Order with complete Method of Payment must be received before Discount Deadline date to receive discounted pricing.

CODE	ITEM	SQ. FT.	COLOR	ONLINE	DISCOUNT	REGULAR	TOTAL
46004	<b>Premium Plush Carpet** - 50 oz. (per sq. ft.)***</b> Rental includes installation and removal of carpet and visqueen.			\$10.60	\$12.20	\$13.65	

AVAILABLE COLORS: Black (06), Dark Grey (35), Silver Dollar (34), Sand (33), White (03), Electric Blue (91), Navy (22), Crimson (74) \*\*\* Minimum 100 sq. ft. order required.

CODE	ITEM	SQ. FT.	COLOR	ONLINE	DISCOUNT	REGULAR	TOTAL
46005	<b>Premium Vinyl** (per sq. ft.)***</b> Rental includes installation and removal of carpet and visqueen.			\$13.70	\$15.75	\$17.65	
46007	<b>1/2" Padding for Vinyl (per sq. ft.)***</b>		n/a	\$5.00	\$5.75	\$6.45	

AVAILABLE COLORS: Rosemary Stone (64), Snow (89), Maple (66), Silverwood (25), Walnut (39), Barnwood (85) \*\*\* Minimum 100 sq. ft. order required.

CODE	ITEM	SQ. FT.	COLOR	ONLINE	DISCOUNT	REGULAR	TOTAL
46001	<b>Premium Carpet - 28 oz. Rental/Sq. Ft.***</b> Rental includes installation and removal of carpet and visqueen.			\$1.10	\$1.10	\$1.25	
46003	<b>Premium Carpet - 28 oz. Rental 1000+ Sq. Ft.***</b> Rental includes installation and removal of carpet and visqueen.			\$1.10	\$1.10	\$1.25	
46002	<b>Premium Carpet - 28 oz. Purchase Sq. Ft.***</b> Rental includes installation and removal of carpet and visqueen.			\$18.80	\$21.60	\$24.20	

100% ULTRA CUT PILE WITH ACTION BACK OR JUTE BACKING AVAILABLE COLORS: Black (06), Deep Navy (22), Silver Cloud (18), Charcoal (17), Red (01), Beige (14) \*\*\* Minimum 100 sq. ft. order required.

CODE	ITEM	SQ. FT.	COLOR	ONLINE	DISCOUNT	REGULAR	TOTAL
50255	<b>Expo Carpet - 13 oz. (Regular &amp; Speical Cut) 10' x 10'</b>			\$164.00	\$205.00	\$229.60	
50256	<b>Expo Carpet - 13 oz. (Regular &amp; Special Cut) 10' x 20'</b>			\$324.50	\$405.00	\$453.60	
50257	<b>Expo Carpet - 13 oz. (Regular &amp; Special Cut) 10' x 30'</b>			\$463.50	\$579.00	\$648.50	
50258	<b>Expo Carpet - 13 oz. (Regular &amp; Special Cut) 10' x 40'</b>			\$647.00	\$808.75	\$905.80	
50400	<b>Expo Carpet - 13 oz. (Regular &amp; Special Cut) 10' x 15'</b>		Tuxedo ONLY	\$468.90	\$539.25	\$603.95	

RECOMMENDED FOR: Standard Size and Inline Booths AVAILABLE COLORS: Black (06), Tuxedo (50), Grey (10), Blue (05), Eclipse (43), Peacock (13), Red (01), Cayenne (92) Burgundy (07) - Variation in dye lot may occur when ordering more than one cut of carpet unless ordered as Special Cut.

CODE	ITEM	SQ. FT.	COLOR	ONLINE	DISCOUNT	REGULAR	TOTAL
50580	<b>Special Cut 0-399 Sq. Ft.</b> Rental includes installation and removal of carpet and visqueen.			\$5.15	\$5.90	\$6.60	
50581	<b>Special Cut 400-900 Sq. Ft.</b> Rental includes installation and removal of carpet and visqueen.			\$4.75	\$5.45	\$6.10	
50582	<b>Special Cut 900+ Sq. Ft.</b> Rental includes installation and removal of carpet and visqueen.			\$4.30	\$4.95	\$5.55	

RECOMMENDED FOR: Island and Large Area Exhibits AVAILABLE COLORS: Black (06), Tuxedo (50), Grey (10), Blue (05), Eclipse (43), Peacock (13), Red (01), Cayenne (92) Burgundy (07) - Order Special Cut when it is important that dye lots match.

CODE	ITEM	SQ. FT.	COLOR	ONLINE	DISCOUNT	REGULAR	TOTAL
50009	<b>1/2" Padding</b>		n/a	\$1.40	\$1.60	\$1.80	
50008	<b>1" Padding</b>		n/a	\$2.65	\$3.05	\$3.40	
50010	<b>Visqueen</b>		n/a	\$0.65	\$0.75	\$0.85	

ENTICE ATTENDEES TO LINGER IN YOUR SPACE WITH SOFT, COMFORTABLE PADDING.

Interested in Elevated Hardwood? Contact us for a quote at: exhibits@shepardes.com.

Submission of this form indicates you read and accept the Payment Policy and Terms &amp; Conditions. There are no exchanges or refunds once item has been delivered to your booth. Cancellations must be received in writing 14 days prior to first exhibitor move in day. Rental items found and in use in your booth are subject to "Regular" pricing.

TOTAL ESTIMATE \$ \_\_\_\_\_

TAX (All tax rates are subject to change) 8.90%

AMOUNT DUE \$ \_\_\_\_\_

COMPANY NAME: \_\_\_\_\_ BOOTH NUMBER: \_\_\_\_\_

CONTACT NAME: \_\_\_\_\_

EMAIL ADDRESS: \_\_\_\_\_

Email completed form to: orders@shepardes.com





# SHEPARD GRAPHIC GUIDELINES

## DIRECT TO SUBSTRATE PRINTING.

Ensure your brand is professionally showcased.  
**With Shepard, You Can.**





Our talented, in-house design team provides graphic layout services to ensure a seamless transfer of files for print and production. If files are being provided, please provide these guidelines to your designer to use as a roadmap for designing and submitting graphics.

### Document Size & Specs

- All artwork should be created at 100% size at 150 dpi or in a proportionally scaled down format.  
*examples: 50% at 300 dpi OR 25% at 600 dpi*
- Please mark artwork size if scaled down.  
*example: DESIGNED AT 50%*
- All content should be kept within the live area, leave approximately 2" all the way around artwork to ensure sign holder or structure metal does not cut off content.
- When working between Adobe programs, DO NOT copy & paste objects from Illustrator to InDesign files. This causes objects to not print correctly. Save elements from Illustrator and place them in InDesign.

### Acceptable File Formats

Shepard uses the most current version of Adobe Creative Cloud®. If providing native files from another version, please also provide an .idml file. **WE DO NOT ACCEPT:** Microsoft® Word®, Excel®, or PowerPoint® files.

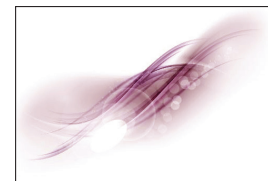
PROGRAM	FILE EXTENSION	SPECIAL CONSIDERATIONS
 Acrobat	.pdf	Must be high resolution with fonts embedded.
 InDesign	.indd or .idml	Images embedded and fonts changed to outlines or send a packaged file with fonts and images.
 Illustrator	.ai or .eps	Vector artwork. Images embedded and fonts changed to outlines or send a packaged file with fonts and images.
 Photoshop	.psd   .tiff .jpeg   .eps	Raster artwork. Must be built in CMYK color space.

### Color

- Artwork must be created in the **CMYK color space**.
- If **PMS color matching** is required during the printing process, please **use Pantone®+ Solid Coated swatches** in your artwork.
- Converting color from RGB to CMYK will change the vibrancy and the look of some effects, DO NOT design artwork in RGB. Colors may vary due to output devices.



RGB Color Space.



CMYK Color Space.

### Fonts & Links

If creating artwork in Adobe® InDesign® or Illustrator® there are two options when supplying fonts.

- **Change fonts to outlines.** This prevents fonts defaulting or being substituted throughout the layout and production process. *REMEMBER: if creating outlines, text is no longer editable.*
- **Package the fonts.** From InDesign or Illustrator select File → Package → Check “Copy Fonts” and submit PC format TTF fonts or OTF fonts with your artwork.
- **Package the links.** From InDesign or Illustrator select File → Package → Check “Copy Linked Graphics” and submit all images with your artwork.



# SHEPARD GRAPHIC GUIDELINES

## CONTINUED

Artwork can be created in several ways.  
Here are some things to consider.

### Vector

- Vector-based artwork is resolution independent and can be enlarged or reduced without loss of quality.
- This is the preferred file type and is most often created in Illustrator and used for creation of logos and icons.

### Raster

- Raster-based artwork is resolution dependent and will reproduce poorly if the appropriate file resolution is not supplied correctly.
- If supplying raster art, it is best to save your artwork in a 1 to 1 (full size) output ratio at 150 dpi or higher. Lower resolutions (1MB or smaller) will result in reduced image quality. File size should not exceed 200MB (if possible).
- Raster images are most often created in Photoshop and is most often used for photographic images.



Vector Logo at 100% scale.



Vector Logo at 200% scale.



Raster Logo at 100% scale.



Raster Logo at 200% scale.

### Resolution

- Artwork should scale to 150 dpi at 100% scale to ensure the artwork remains high resolution when printed at full size. See examples and samples below.

*examples: 1:1 or 100% - resolution no less than 150 dpi  
2:1 or 50% - resolution no less than 300 dpi  
4:1 or 25% - resolution no less than 600 dpi*

- Images pulled from the Internet are NOT suitable for high quality, large format printing. These images are low resolution and will not reproduce well.
- Verify resolution by viewing artwork on the screen at full size in high definition. Observe image from different distances away, artwork is typically view from a couple feet away.

### Before Sending Files

- Please name your files appropriately for easy identification.

*examples: Poster\_22x28.pdf  
Panel A\_1920x898\_Qty3.pdf  
Shepard\_Booth1905\_Panel A.pdf*

- Clients should compress information that they transfer electronically (.zip).

NOTE: Please provide a JPEG thumbnail or low resolution PDF of the graphic for the Account Executive to view, this helps when creating/entering orders in our system.

### Submitting Your Files

- **FTP.** Ask your Account Executive to create a folder in the "Dropoff Folder." Packaged files should be compressed (.zip).

**Website:** [files.shepardes.com](https://files.shepardes.com)

**Login:** **sesftp**

**Password:** **ftpftp**

- **Email Attachment.** MAXIMUM SIZE: 10MB
- **Large File Transfer Site.** DropBox, YouSendIt, WeTransfer, Hightail, etc.

# ELEVATE YOUR EXHIBIT

## With Shepard, You Can.

### What are *your* exhibit goals?

Whether you're new to the exhibits space or a seasoned pro, Shepard's here to help. We're your go-to exhibits partner.

- ☐ Bring your brand to life
- ☐ Attract attention
- ☐ Generate traffic
- ☐ Create an engaging experience
- ☐ Make exhibiting easy



### High-impact Exhibits

Whatever your needs (or budget), Shepard's got you covered.

- **Custom Fabrication** for a signature look & feel
- **Custom Rental** for ultimate flexibility
- **Fabric Panels** for maximum ease



### Offering innovative exhibit frameworks...and more!

- Graphic design & printing
- Equipment & furnishings
- Audio visual
- Logistics



### Why Shepard?

- **Complimentary consultation:**  
We listen, we strategize—and propose on-target ideas
- **Blue Diamond customer service:**  
Fast, courteous, thoughtful—Shepard's there for you
- **Smart, strategic solutions:**  
Shepard delivers exhibits that engage your audiences

## SHIELDS &amp; BARRIERS

Atlanta Boat Show

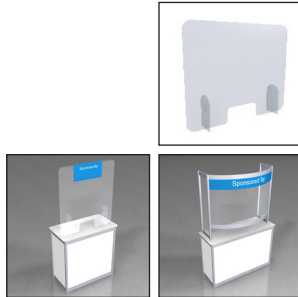
G155540123

Georgia World Congress Center | Atlanta, GA

January 12 - 15, 2023

## ONLINE &amp; DISCOUNT DEADLINE:\* TUESDAY, DECEMBER 13, 2022

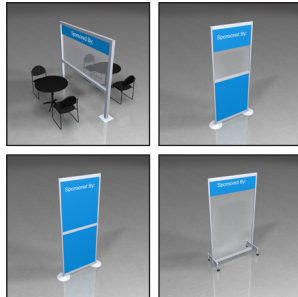
\* Order with complete Method of Payment must be received before Discount Deadline date to receive discounted pricing. Counters and Furnishings not included.



Counters not included.

## Plexi Shields

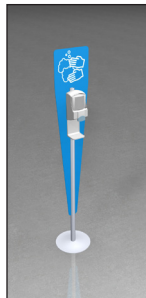
CODE	ITEM	QTY	ONLINE	DISCOUNT	REGULAR	TOTAL
66651	<b>Standard Plexi Shield</b> (CVPS1) 40" (l) x 36" (h)		\$370.35	\$425.90	\$477.00	
66652	<b>Tall Plexi Shield</b> (CVPS2) 40" (l) x 44" (h)		\$455.80	\$524.15	\$587.05	
66653	<b>Curved Plexi Shield</b> (CVPS3) 4' 8.75" (l) x 4' (h) x 2' 2.25" (d)		\$569.75	\$655.20	\$733.80	



## Walls &amp; Dividers

CODE	ITEM	QTY	ONLINE	DISCOUNT	REGULAR	TOTAL
66654	<b>Large Wall Divider</b> (CVDW1) 9' 1.25" (l) x 7' (h) x 11.85" (d) base 30" from floor		\$569.75	\$655.20	\$733.80	
66655	<b>Plexi/Trovice Panel Wall Divider</b> (CVDW2) 3' 4.5" (l) x 8' high x Approx. 6" (d) base		\$398.85	\$458.70	\$513.75	
66656	<b>Trovice/Trovice Wall Divider</b> (CVDW3) 3' 4.5" (l) x 8' (h) x 1' 9" (d) base		\$341.85	\$393.15	\$440.35	
66657	<b>Plexi Rolling Baffle</b> (CVDW4) 4' 2.5" (l) x 7' (h) x 1' 9" (d) base		\$712.20	\$819.05	\$917.35	

## Sanitizer Kiosk



CODE	ITEM	QTY	ONLINE	DISCOUNT	REGULAR	TOTAL
66650	<b>Sanitizer Kiosk A</b> (CVSK1) 40" (l) x 36" (h)		\$427.35	\$491.45	\$550.40	

<b>TOTAL ESTIMATE</b>	\$ _____
<b>TAX</b> (All tax rates are subject to change)	8.90%
<b>AMOUNT DUE</b>	\$ _____

Submission of this form indicates you read and accept the Payment Policy and Terms & Conditions. There are no exchanges or refunds once item has been delivered to your booth. Cancellations must be received in writing 30 days prior to first exhibitor move in day. Rental items found and in use in your booth are subject to "Regular" pricing.

COMPANY NAME: \_\_\_\_\_ BOOTH NUMBER: \_\_\_\_\_

CONTACT NAME: \_\_\_\_\_

EMAIL ADDRESS: \_\_\_\_\_

# EXHIBIT COUNTER RENTALS

**Atlanta Boat Show**
**G155540123**

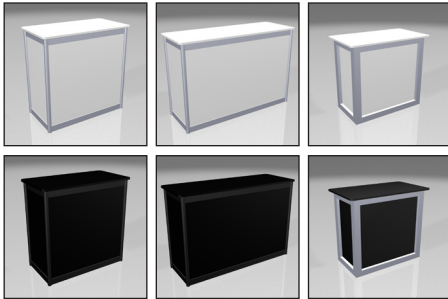
Georgia World Congress Center | Atlanta, GA

January 12 - 15, 2023

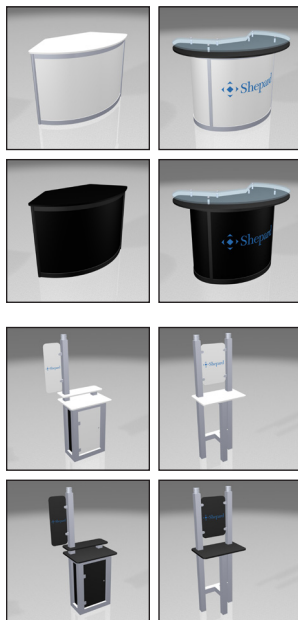
**ONLINE & DISCOUNT DEADLINE:\* TUESDAY, DECEMBER 13, 2022**

\* Order with complete Method of Payment must be received before Discount Deadline date to receive discounted pricing. Additional Rush charges may be applied to orders placed after deadline or on-site.

Choose Your Counter &amp; Customize to Fit Your Exhibit!

**AVAILABLE COLORS FOR ALL PRODUCTS:**
**Metal Colors:** Silver (15) and **Panel Colors:** White (03) or Black (06)

**Locking Cabinets**

CODE	ITEM	QTY	ONLINE	DISCOUNT	REGULAR	PANEL COLOR
6628203 (w) 6628206 (b)	<b>1 Meter Locking Cabinet (LC1)</b> 3' 6" (l) x 3' 6" (h) x 1' 9" (d) Graphic Size: 968mm x 898mm		\$937.10	\$1,077.65	\$1,206.95	
6628303 (w) 6628306 (b)	<b>1.5 Meter Locking Cabinet (LC2)</b> 5' (l) x 3' 6" (h) x 1' 9" (d) Graphic Size: 1463mm x 898mm		\$1,137.15	\$1,307.70	\$1,464.60	
6628403 (w) 6628406 (b)	<b>Locking Cabinet (LC3)</b> 3' 9" (l) x 3' 6" (h) x 2' 3" (d) Graphic Size: 922mm x 872mm		\$691.25	\$794.95	\$890.35	

**Reception Counters**


CODE	ITEM	QTY	ONLINE	DISCOUNT	REGULAR	PANEL COLOR
6627503 (w) 6627506 (b)	<b>Reception Counter (RC2)</b> 4'10.75" (l) x 40" (h) x 2' 4.75" (d) Graphic Size: 1530mm x 898mm		\$963.65	\$1,108.20	\$1,241.20	
6627603 (w) 6627606 (b)	<b>Reception Counter (RC3)</b> 5' 2.75" (l) x 42" (h) x 3' 5.5" (d) Graphic Size: 1080mm x 898mm		\$2,090.45	\$2,404.00	\$2,692.50	

**Computer Stands - Silver Metal Only (graphic included!)**

CODE	ITEM	QTY	ONLINE	DISCOUNT	REGULAR	PANEL COLOR
6628503 (w) 6628506 (b)	<b>Computer Stand 1 (CS1)</b> 3' (l) x 6' 3" (h) x 1' 9" (d) Graphic Size: 250mm x 700mm		\$1,215.70	\$1,398.05	\$1,565.80	
6628603 (w) 6628606 (b)	<b>Computer Stand 2 (CS2)</b> 2' 3" (l) x 6' 3" (h) x 1' 6" (d) Graphic Size: 380mm x 580mm		\$708.60	\$814.90	\$912.70	

<b>TOTAL ESTIMATE</b>	\$ _____
<b>TAX</b> (All tax rates are subject to change)	8.90%
<b>AMOUNT DUE</b>	\$ _____

Submission of this form indicates you read and accept the Payment Policy and Terms & Conditions.  
All orders cancelled by the exhibitor within 30 days of first day of exhibitor move in day may be subject to cancellation fees up to 100% of the total order, based upon the status of move-in, work performed and/or Shepard set-up costs or expenses.

COMPANY NAME: \_\_\_\_\_ BOOTH NUMBER: \_\_\_\_\_

CONTACT NAME: \_\_\_\_\_

EMAIL ADDRESS: \_\_\_\_\_


 Email completed form to: [exhibits@shepardes.com](mailto:exhibits@shepardes.com)

# PRODUCT DISPLAYS & CHARGING STATION RENTALS

**Atlanta Boat Show**
**G155540123**

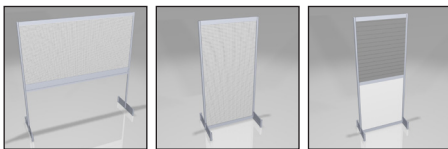
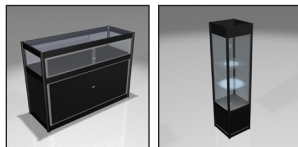
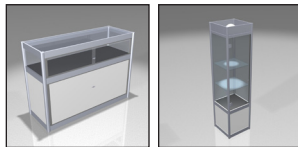
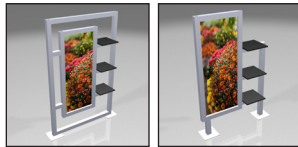
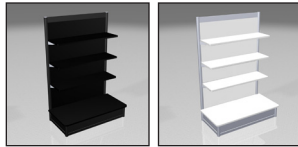
Georgia World Congress Center | Atlanta, GA

January 12 - 15, 2023

**ONLINE & DISCOUNT DEADLINE:\* TUESDAY, DECEMBER 13, 2022**

\* Order with complete Method of Payment must be received before Discount Deadline date to receive discounted pricing. Additional Rush charges may be applied to orders placed after deadline or on-site.

Choose Your Unit &amp; Customize to Fit Your Products!

**AVAILABLE COLORS FOR ALL PRODUCTS:**
**Metal Colors:** Black (06) or Silver (15) and **Panel Colors:** White (03) or Black (06)

**Product Displays**

CODE	ITEM	QTY	ONLINE	DISCOUNT	REGULAR	PANEL COLOR
6627703 (w) 6627706 (b)	<b>Gondola</b> 3' 6" (l) x 4' 6" (h) x 1' 3" (d)		\$656.70	\$755.20	\$845.80	
6627803 (w) 6627806 (b)	<b>GL1</b> 5' 4" (l) x 8" (h) x 1' 3" (d) Graphic Sizes: 674mm x 1682mm		\$649.15	\$746.50	\$836.10	
6627903 (w) 6627906 (b)	<b>GL2</b> 4' 3" (l) x 7" (h) x 1' 3" (d) Graphic Sizes: 674mm x 1682mm		\$1,118.95	\$1,286.80	\$1,441.20	

**Showcases**

CODE	ITEM	QTY	ONLINE	DISCOUNT	REGULAR	PANEL COLOR
6627003 (w) 6627006 (b)	<b>Quarterview Showcase</b> (Qtrview) 4' 6" (l) x 3' 3" (h) x 1' 9" (d)		\$1,264.30	\$1,453.95	\$1,628.40	
6627203 (w) 6627206 (b)	<b>Square Showcase</b> (Square) 1' 9" (l) x 7" (h) x 1' 9" (d)		\$1,364.55	\$1,569.25	\$1,757.55	

**Charging Unit**

CODE	ITEM	QTY	ONLINE	DISCOUNT	REGULAR	PANEL COLOR
66430	<b>Phone Charging Station</b> (PCS) 3' (l) x 6' 3" (h) x 1' 9" (d) Graphic Size: 380mm x 710mm		\$2,148.00	\$2,470.20	\$2,766.60	Black ONLY

**Perforated/Peg Boards**

CODE	ITEM	QTY	ONLINE	DISCOUNT	REGULAR
66148	<b>8' x 4' Pegboard Panel</b> (PerfH)		\$319.25	\$367.15	\$411.20
66149	<b>4' x 8' Pegboard Panel</b> (PerfV)		\$319.25	\$367.15	\$411.20
50104	<b>6" Pegs - 1 dozen</b> (6"Pegs)		\$52.15	\$59.95	\$67.15
66147	<b>3.5' x 8' Slat Wall, Grey</b> (Slatwall)		\$319.25	\$367.15	\$411.20

**TOTAL ESTIMATE** \$ \_\_\_\_\_

**TAX** (All tax rates are subject to change) 8.90%

**AMOUNT DUE** \$ \_\_\_\_\_

Submission of this form indicates you read and accept the Payment Policy and Terms & Conditions. All orders cancelled by the exhibitor within 30 days of first day of exhibitor move in day may be subject to cancellation fees up to 100% of the total order, based upon the status of move-in, work performed and/or Shepard set-up costs or expenses.

COMPANY NAME: \_\_\_\_\_ BOOTH NUMBER: \_\_\_\_\_

CONTACT NAME: \_\_\_\_\_

EMAIL ADDRESS: \_\_\_\_\_


 Email completed form to: [exhibits@shepardes.com](mailto:exhibits@shepardes.com)



# INLINE BOOTH RENTALS

## Atlanta Boat Show

G155540123

Georgia World Congress Center | Atlanta, GA

January 12 - 15, 2023

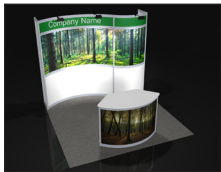
### ONLINE & DISCOUNT DEADLINE:\* FRIDAY, DECEMBER 16, 2022

\* Order with complete Method of Payment must be received before Discount Deadline date to receive discounted pricing. Additional Rush charges may be applied to orders placed after deadline or on-site.

## Turnkey Rental Designs Make Exhibiting Easier!

**Carpet and Electricity not included.** Please order as needed. All Exhibit Booth Rentals include installation/dismantling and graphic panels as shown for print-ready graphics. If graphics submitted are not print-ready, additional fees may apply. Monitor and lighting options available.

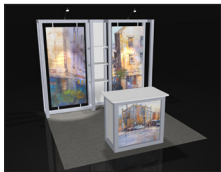
Don't see what you are looking for or need a tweak to a design? Let one of our incredible designers create a space just for you! Please contact an Exhibit Team member with any questions or customization requests.



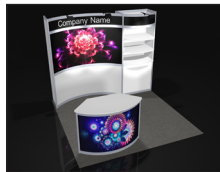
The Eddie



The Jonathon



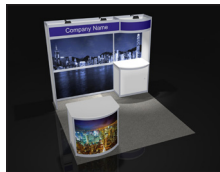
The Pierce



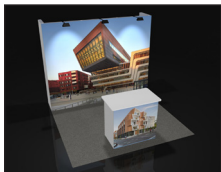
The Madison



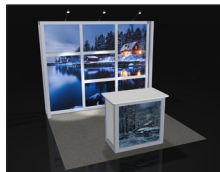
The Grant



The Harrison



The Hamilton



The Lucy

### Inline Booths

CODE	ITEM	QTY	ONLINE	DISCOUNT	REGULAR	TOTAL
66470	The Eddie - 10' x 10'		\$3,811.65	\$4,383.40	\$4,909.40	
66471	The Eddie - 10' x 20'		\$6,206.95	\$7,138.00	\$7,994.55	
CODE	ITEM	QTY	ONLINE	DISCOUNT	REGULAR	TOTAL
66474	The Jonathon - 10' x 10'		\$2,659.10	\$3,057.95	\$3,424.90	
66475	The Jonathon - 10' x 20'		\$4,654.50	\$5,352.65	\$5,994.95	
CODE	ITEM	QTY	ONLINE	DISCOUNT	REGULAR	TOTAL
66477	The Pierce - 10' x 10'		\$3,298.30	\$3,793.05	\$4,248.20	
66478	The Pierce - 10' x 20'		\$6,262.55	\$7,201.95	\$8,066.20	
CODE	ITEM	QTY	ONLINE	DISCOUNT	REGULAR	TOTAL
66484	The Madison - 10' x 10'		\$3,999.75	\$4,599.70	\$5,151.65	
66485	The Madison - 10' x 20'		\$4,740.40	\$5,451.45	\$6,105.60	
CODE	ITEM	QTY	ONLINE	DISCOUNT	REGULAR	TOTAL
66486	The Grant - 10' x 10'		\$4,221.85	\$4,855.15	\$5,437.75	
66487	The Grant - 10' x 20'		\$5,851.45	\$6,729.15	\$7,536.65	
CODE	ITEM	QTY	ONLINE	DISCOUNT	REGULAR	TOTAL
66492	The Harrison - 10' x 10'		\$3,881.25	\$4,463.45	\$4,999.05	
66493	The Harrison - 10' x 20'		\$5,703.25	\$6,558.75	\$7,345.80	
CODE	ITEM	QTY	ONLINE	DISCOUNT	REGULAR	TOTAL
66467	The Hamilton - 10' x 10'		\$2,704.55	\$3,110.25	\$3,483.50	
66468	The Hamilton - 10' x 20'		\$4,738.10	\$5,448.80	\$6,102.65	
CODE	ITEM	QTY	ONLINE	DISCOUNT	REGULAR	TOTAL
66473	The Lucy - 10' x 10'		\$2,444.30	\$2,810.95	\$3,148.25	

TOTAL ESTIMATE	\$ _____
TAX (All tax rates are subject to change)	8.90%
AMOUNT DUE	\$ _____

Submission of this form indicates you read and accept the Payment Policy and Terms & Conditions. All orders cancelled by the exhibitor within 30 days of first day of exhibitor move in day may be subject to cancellation fees up to 100% of the total order, based upon the status of move-in, work performed and/or Shepard set-up costs or expenses.

COMPANY NAME: \_\_\_\_\_ BOOTH NUMBER: \_\_\_\_\_

CONTACT NAME: \_\_\_\_\_

EMAIL ADDRESS: \_\_\_\_\_

# FABEX BOOTH RENTALS

## Atlanta Boat Show

G155540123

Georgia World Congress Center | Atlanta, GA

January 12 - 15, 2023

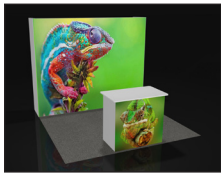
### ONLINE & DISCOUNT DEADLINE:\* TUESDAY, DECEMBER 13, 2022

\* Order with complete Method of Payment must be received before Discount Deadline date to receive discounted pricing. Additional Rush charges may be applied to orders placed after deadline or on-site.

**Carpet is not included.** Please use the Flooring Order Form to order carpet or other flooring options.

All Exhibit Booth Rentals include installation/dismantling and graphic panels as shown for print-ready graphics. If graphics submitted are not print-ready, additional fees may apply. Monitor and lighting options available.

**Please contact an Exhibit Team member with any questions.**



FX21



FX2H1



FX22



FX2H2

### 10' x 10' Fabric Booth

CODE	ITEM	QTY	ONLINE	DISCOUNT	REGULAR	TOTAL
66557	10' x 10' Booth (FX21)		\$2,513.40	\$2,890.40	\$3,237.25	
66561	10' x 10' Booth with Header (FX2H1)		\$3,075.40	\$3,536.70	\$3,961.10	

#### GRAPHIC SIZE SPECIFICATIONS

Backwall Graphic Size 3042mm x 2432mm Side Panel Colors ☐ White ☐ Black

Counter Graphic Size 1079mm x 1020mm

Header Graphic Size 2440mm x 380mm

### 10' x 20' Fabric Booth

CODE	ITEM	QTY	ONLINE	DISCOUNT	REGULAR	TOTAL
66559	10' x 20' Booth (FX22)		\$4,356.55	\$5,010.05	\$5,611.25	
66567	10' x 20' Booth with Header (FX2H2)		\$4,859.30	\$5,588.20	\$6,258.80	

#### GRAPHIC SIZE SPECIFICATIONS

Backwall Graphic Size 6012mm x 2432mm Side Panel Colors ☐ White ☐ Black

Counter Graphic Size 1079mm x 1020mm

Header Graphic Size 2440mm x 380mm

TOTAL ESTIMATE	\$ _____
TAX (All tax rates are subject to change)	8.90%
AMOUNT DUE	\$ _____

Submission of this form indicates you read and accept the Payment Policy and Terms & Conditions. All orders cancelled by the exhibitor within 30 days of first day of exhibitor move in day may be subject to cancellation fees up to 100% of the total order, based upon the status of move-in, work performed and/or Shepard set-up costs or expenses.

COMPANY NAME: \_\_\_\_\_ BOOTH NUMBER: \_\_\_\_\_

CONTACT NAME: \_\_\_\_\_

EMAIL ADDRESS: \_\_\_\_\_



Email completed form to: [exhibits@shepardes.com](mailto:exhibits@shepardes.com)



# FABEX BACKLIT BOOTH RENTALS

**Atlanta Boat Show**

**G155540123**

Georgia World Congress Center | Atlanta, GA

January 12 - 15, 2023

**ONLINE & DISCOUNT DEADLINE:\* TUESDAY, DECEMBER 13, 2022**

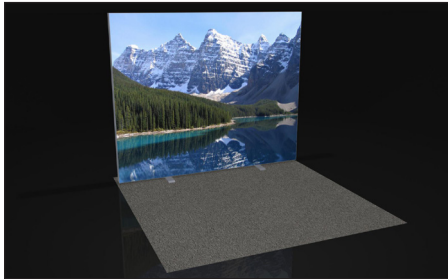
\* Order with complete Method of Payment must be received before Discount Deadline date to receive discounted pricing. Additional Rush charges may be applied to orders placed after deadline or on-site.

## Freestanding 8' High Backlit Backwalls with Full Color Graphics

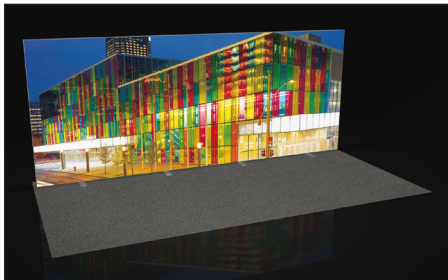
**Carpet/flooring, furnishings, electrical and accessories not included.** Please use the appropriate order forms to order these items.

All Exhibit Booth Rentals include installation/dismantling and graphic panels as shown for print-ready graphics. If graphics submitted are not print-ready, additional fees may apply. Monitor and lighting options available.

**Please contact an Exhibit Team member with any questions.**



FX11



FX12



FX13

## Freestanding 8' High Backlit Backwalls with Full Color Graphics

CODE	ITEM	QTY	ONLINE	DISCOUNT	REGULAR	TOTAL
66564	8' x 10' Backlit Backwall with Graphics (FX11) Graphic Size: 2992mm x 2436mm		\$2,534.40	\$2,914.55	\$3,264.30	
66565	8' x 20' Backlit Backwall with Graphics (FX12) Graphic Size: 5992mm x 2436mm		\$3,916.70	\$4,504.20	\$5,044.70	
66566	8' x 30' Backlit Backwall with Graphics (FX13) Graphic Size: 8992mm x 2436mm		\$5,299.05	\$6,093.90	\$6,825.15	

TOTAL ESTIMATE	\$ _____
TAX (All tax rates are subject to change)	8.90%
AMOUNT DUE	\$ _____

Submission of this form indicates you read and accept the Payment Policy and Terms & Conditions. All orders cancelled by the exhibitor within 30 days of first day of exhibitor move in day may be subject to cancellation fees up to 100% of the total order, based upon the status of move-in, work performed and/or Shepard set-up costs or expenses.

COMPANY NAME: \_\_\_\_\_ BOOTH NUMBER: \_\_\_\_\_

CONTACT NAME: \_\_\_\_\_

EMAIL ADDRESS: \_\_\_\_\_



Email completed form to: [exhibits@shepardes.com](mailto:exhibits@shepardes.com)

## ISLAND BOOTH RENTALS

## Atlanta Boat Show

G155540123

Georgia World Congress Center | Atlanta, GA  
January 12 - 15, 2023

## ONLINE &amp; DISCOUNT DEADLINE:\* TUESDAY, DECEMBER 13, 2022

\* Order with complete Method of Payment must be received before Discount Deadline date to receive discounted pricing. Additional Rush charges may be applied to orders placed after deadline or on-site.

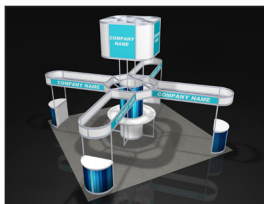
## Turnkey Rental Designs Make Exhibiting Easier!

**Carpet and electricity not included.** Please order as needed. All Exhibit Booth Rentals include installation/dismantling and graphic panels as shown for print-ready graphics. If graphics submitted are not print-ready, additional fees may apply. Monitor and lighting options available.

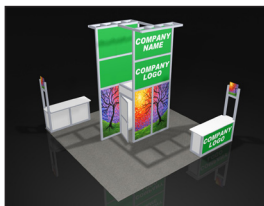
Please contact an Exhibit Team member with any questions.



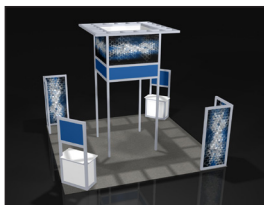
The Monroe



The Washington



The Tyler



The Garfield

## Island Booths

CODE	ITEM	QTY	ONLINE	DISCOUNT	REGULAR	TOTAL
66494	The Monroe		\$9,702.95	\$11,158.40	\$12,497.40	
66368	The Washington		\$13,924.95	\$16,013.70	\$17,935.35	
66495	The Tyler		\$10,362.25	\$11,916.60	\$13,346.60	
66496	The Garfield		\$10,147.35	\$11,669.45	\$13,069.80	

TOTAL ESTIMATE \$ \_\_\_\_\_

TAX (All tax rates are subject to change) 8.90%

AMOUNT DUE \$ \_\_\_\_\_

Submission of this form indicates you read and accept the Payment Policy and Terms & Conditions. All orders cancelled by the exhibitor within 30 days of first day of exhibitor move in day may be subject to cancellation fees up to 100% of the total order, based upon the status of move-in, work performed and/or Shepard set-up costs or expenses.

COMPANY NAME: \_\_\_\_\_ BOOTH NUMBER: \_\_\_\_\_

CONTACT NAME: \_\_\_\_\_

EMAIL ADDRESS: \_\_\_\_\_